



Rewarding Learning

ADVANCED SUBSIDIARY (AS)
General Certificate of Education
2017

Centre Number

--	--	--	--	--

Candidate Number

--	--	--	--	--

Mathematics

Assessment Unit C1

assessing

Module C1:

AS Core Mathematics 1



[AMC11]

AMC11

WEDNESDAY 17 MAY, MORNING

TIME

1 hour 30 minutes.

INSTRUCTIONS TO CANDIDATES

Write your Centre Number and Candidate Number in the spaces provided at the top of this page.

You must answer **all eight** questions in the spaces provided.

Do not write outside the boxed area on each page or on blank pages.

Complete in black ink only. **Do not write with a gel pen.**

Questions which require drawing or sketching should be completed using an H.B. pencil.

All working should be clearly shown in the spaces provided. Marks may be awarded for partially correct solutions. **Answers without working may not gain full credit.**

Answers should be given to three significant figures unless otherwise stated.

You are not permitted to use any calculating aid in this paper.

INFORMATION FOR CANDIDATES

The total mark for this paper is 75

Figures in brackets printed down the right-hand side of pages indicate the marks awarded to each question or part question.

A copy of the **Mathematical Formulae and Tables booklet** is provided.

Throughout the paper the logarithmic notation used is $\ln z$ where it is noted that $\ln z \equiv \log_e z$

10435



24AMC1101

BLANK PAGE
DO NOT WRITE ON THIS PAGE

10435



24AMC1102





Handwriting practice area with 20 horizontal dotted lines.



2 Fig. 1 below shows a sketch of the graph of the function $y = f(x)$.

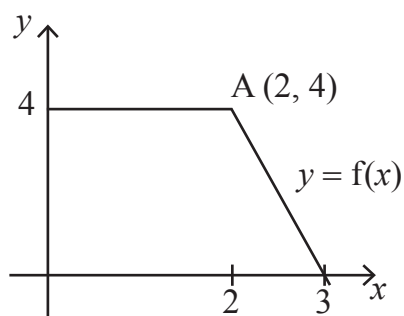


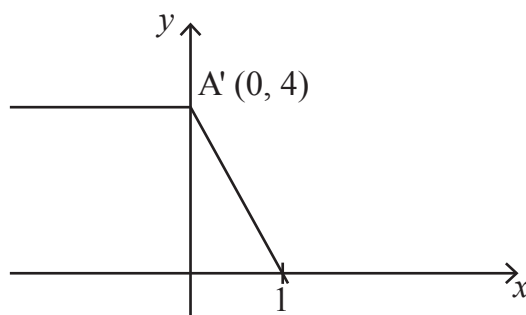
Fig. 1

Point A has coordinates (2, 4).

Each sketch below shows a single transformation of the function $y = f(x)$.

For each sketch, use function notation to describe the transformations shown.

(i)



[2]

.....

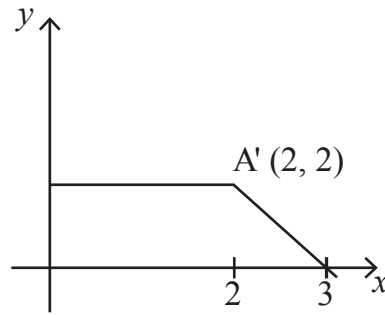
.....

.....

.....



(ii)



[2]

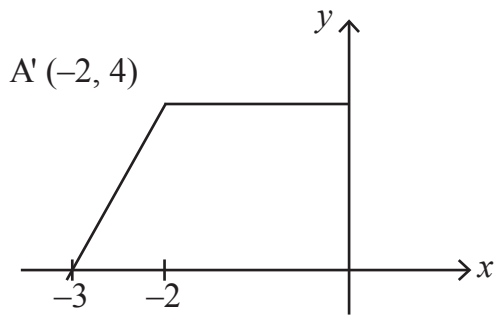
.....

.....

.....

.....

(iii)



[2]

.....

.....

.....

.....





Handwriting practice area with 20 horizontal dotted lines.

10435

[Turn over



24AMC1109

4 Fig. 3 below shows the rhombus ABCD.

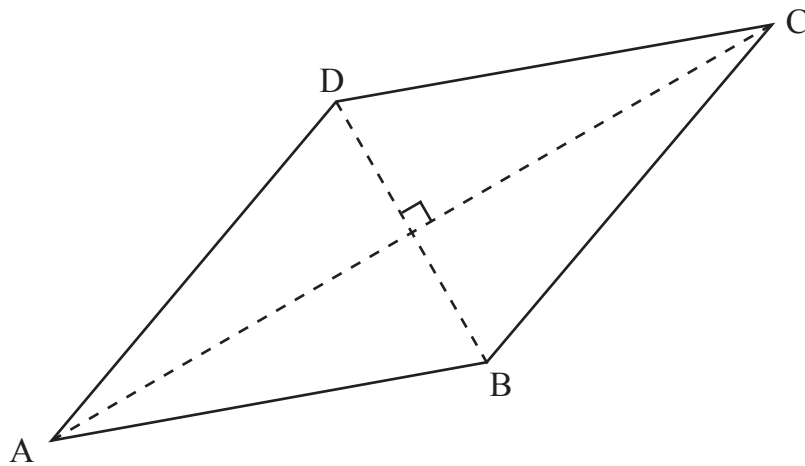


Fig. 3

Point A has coordinates $(-2, 1)$.

Point C has coordinates $(3, 11)$.

Find the equation of the line BD.

Leave your answer in the form $ax + by + c = 0$, where a , b and c are integers. [6]

.....

.....

.....

.....

.....

.....

.....

.....

.....

.....

.....

.....

.....

.....

.....

.....

.....

.....

.....

.....

.....

.....





Handwriting practice area with 20 horizontal dotted lines.

10435

[Turn over



24AMC1111



Handwriting practice area with 20 horizontal dotted lines.

10435

[Turn over



24AMC1115



Handwriting practice area with 20 horizontal dotted lines.

10435

[Turn over



24AMC1117



Handwriting practice area with 20 horizontal dotted lines.

10435

[Turn over



24AMC1119

DO NOT WRITE ON THIS PAGE

For Examiner's use only	
Question Number	Marks
1	
2	
3	
4	
5	
6	
7	
8	

Total Marks	
--------------------	--

Examiner Number

Permission to reproduce all copyright material has been applied for.
In some cases, efforts to contact copyright holders may have been unsuccessful and CCEA will be happy to rectify any omissions of acknowledgement in future if notified.

10435/7



24AMC1124